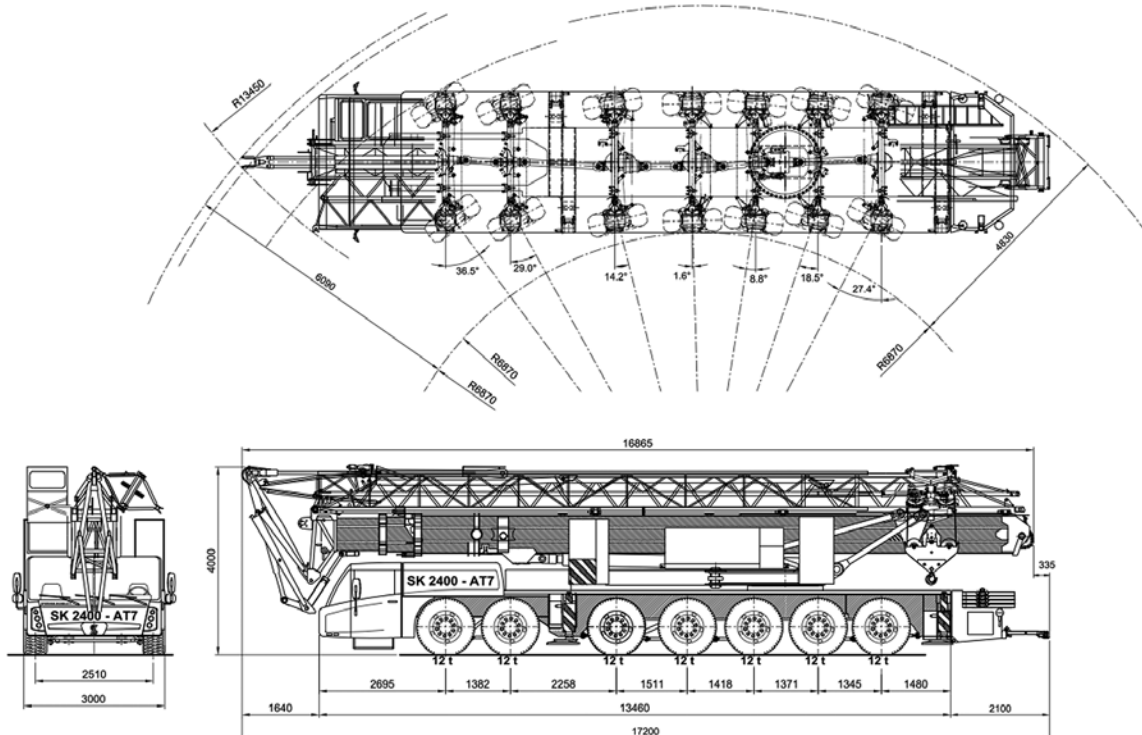




BERNARD HUNTER CRANE HIRE

SK2400-AT7 - DIMENSIONS & LIFTING HEIGHTS



Serial Number

Year of construction

Max. speed

	m/min	kg		
	10	18000		0 - 70 m/min
	20	9000		
	30	4500		
	50	2250		
	75	0		0-0,9 r/min

Strength / stability : as per EN 13001
Stability : as per ISO 4305
Classification : as per ISO 4301-2:A4

Max. load
18,0 tonne

Max. radius
with max. load
13,5 m

Max. capacity
243 tm

Max.
jib length
42 m

All motions with hydraulic proportional controls.
Luffing the jib 30° can be controlled from crane cab or by remote control.

Counterweight Crane : 23000 kg.
Continuous slewing of the crane (360°) with the outriggers out and support pads down.
Crane can be driven in its erected position under special conditions (refer user guide).
The crane should be folded in at wind force 10 (Bf) (24 m/sec) or when not in use for a longer period.

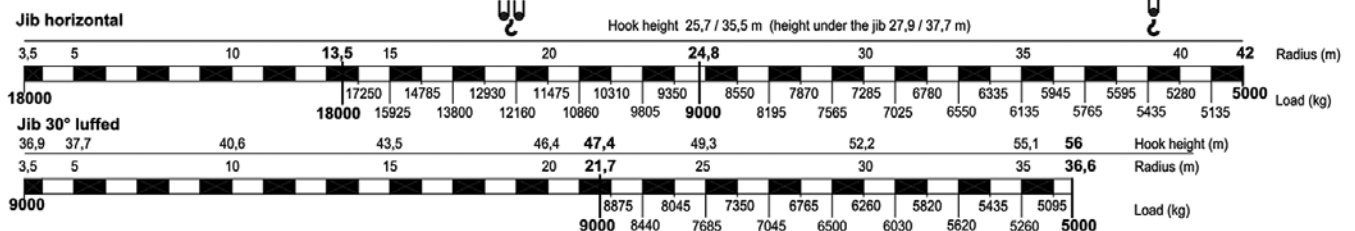
Rated lifting capacity is net capacity.
Max. line pull force : 4500 kg.
2 parts of line : 9000 kg.
4 parts of line : 18000 kg.
Sail area of the load max.: 1,0 m²/ton.
Operating temperature range from:
-15°C till +40°C.

Outriggers positioned according to lifting chart.
Outrigger support base : 7,95 x 7,63 m.
Operation allowed up to wind force 8 Bf (17 m/s).
Outrigger support base : 7,95 x 5,72 m.
Operation allowed up to wind force 8 Bf (17 m/s).
Max. outrigger force: 600 kN.

LIFTING CHART

Outrigger support base 7,95 m x 7,63 m

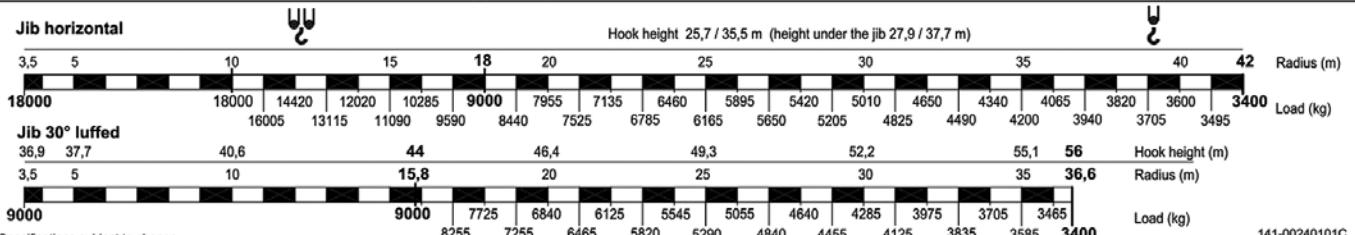
up to wind force 8 on the Beaufort scale (17 m/sec)



LIFTING CHART

Outrigger support base 7,95 m x 5,72 m

up to wind force 8 on the Beaufort scale (17 m/sec)



Specifications subject to change

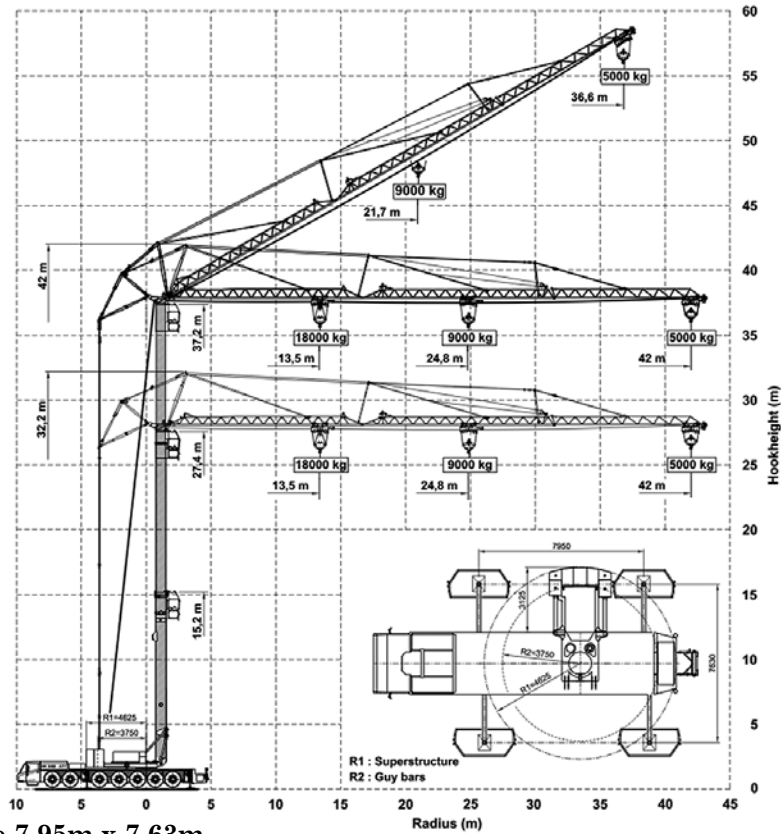
141-00240101C

Contact Bernard Hunter Ltd for all your Crane Hire needs on 0131 663 4661 or email info@bernardhunter.com

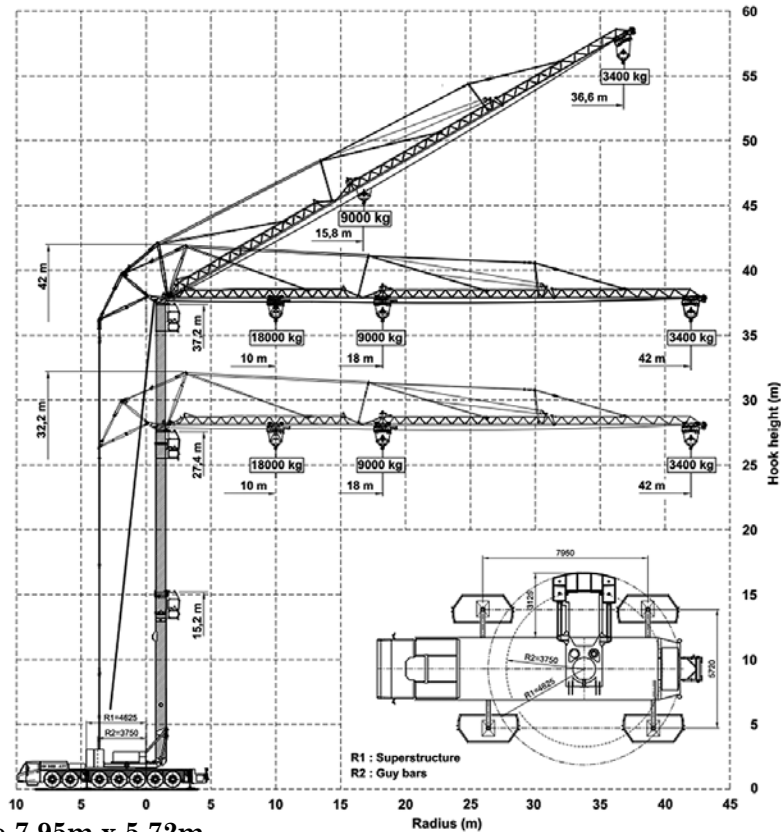


BERNARD HUNTER CRANE HIRE

SK2400-AT7- HOISTING SPECIFICATIONS



Outrigger Support Base 7.95m x 7.63m



Outrigger Support Base 7.95m x 5.72m

Contact Bernard Hunter Ltd for all your Crane Hire needs on 0131 663 4661 or email info@bernardhunter.com