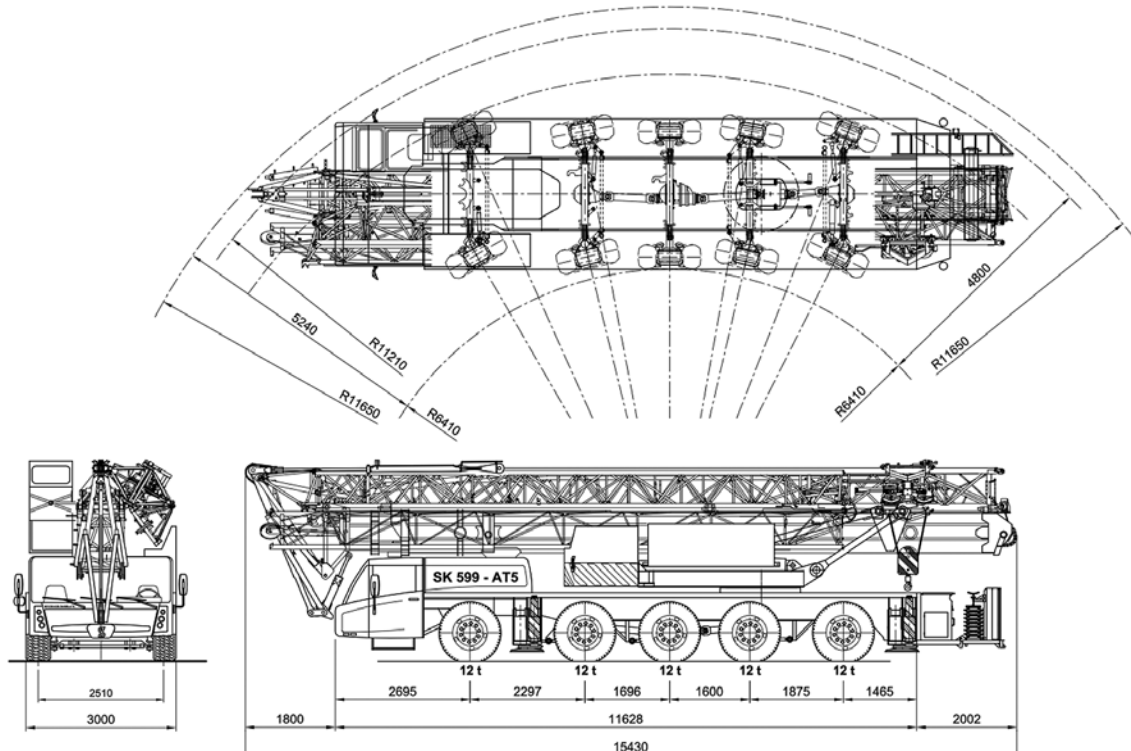







BERNARD HUNTER CRANE HIRE

SK599-AT5 - DIMENSIONS & LIFTING HEIGHTS

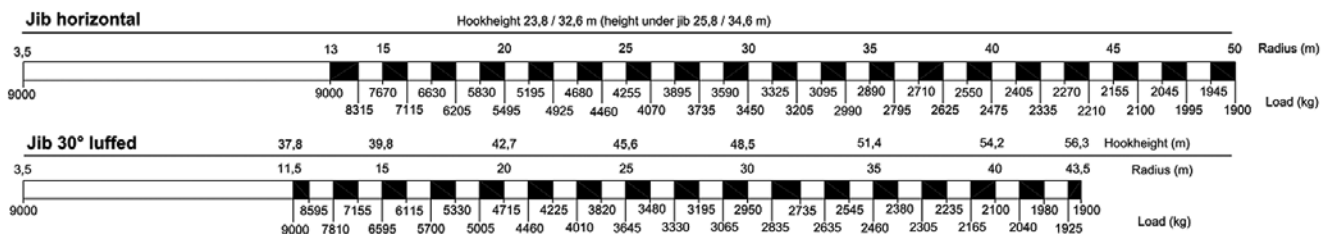


Make: **SPIERINGS** Type: **SK599-AT5**

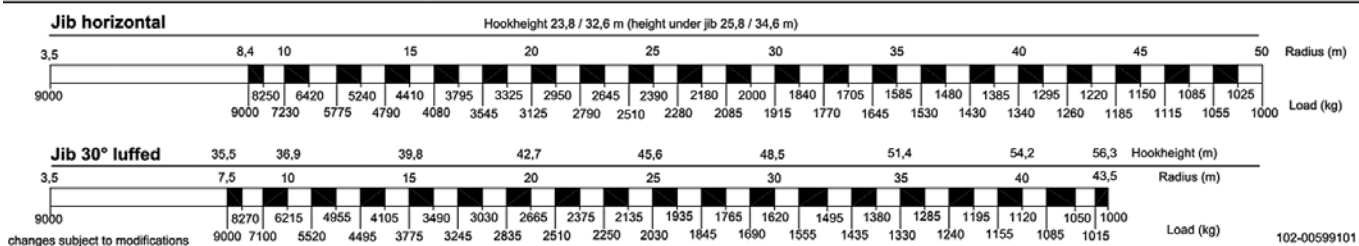
Crane specification

Serial number <div></div>		Crane group : A3 as per FEM 1.001		Max. load	Max.radius with max. load	Max. capacity	Max. jib length
Year of construction <div></div>		Loadspectrum : Q1 as per FEM 1.001		9,0 tonne	13 m	117 tm	50 m
		Classification : U4 as per FEM 1.001					
		Stability : as per FEM 1.001					
Speeds <div>Jib horizontal / jib 30° luffed</div>				Counterweight crane: 10380 kg. Continues slewing (360°) with outriggers out and support pads down. Crane can be driven in its erected position under special conditions (refer user guide).		Rated lift capacity is net capacity. Always two parts of line. Max. line pull force: 4500 kg. Operating temperature range from: -15°C till + 40°C. Sail area of the load max.: 1,0 m²/ton.	
	m/min	kg		0 - 70 m/min			
	20	9000					
	32	4500					
	50	2250					
	75	0		0 - 0,9 rpm			
All motions with hydraulic proportional controls. Luffing the jib 30° can be controlled from crane cab or by remote control. The crane should be folded in at wind force 9 (Bf) (21 m/sec) or when not in use for a longer period.							
				</			

Lifting chart Outrigger support base 7,50 m x 7,66 m



Lifting chart Outrigger support base 7,50 m x 5,72 m



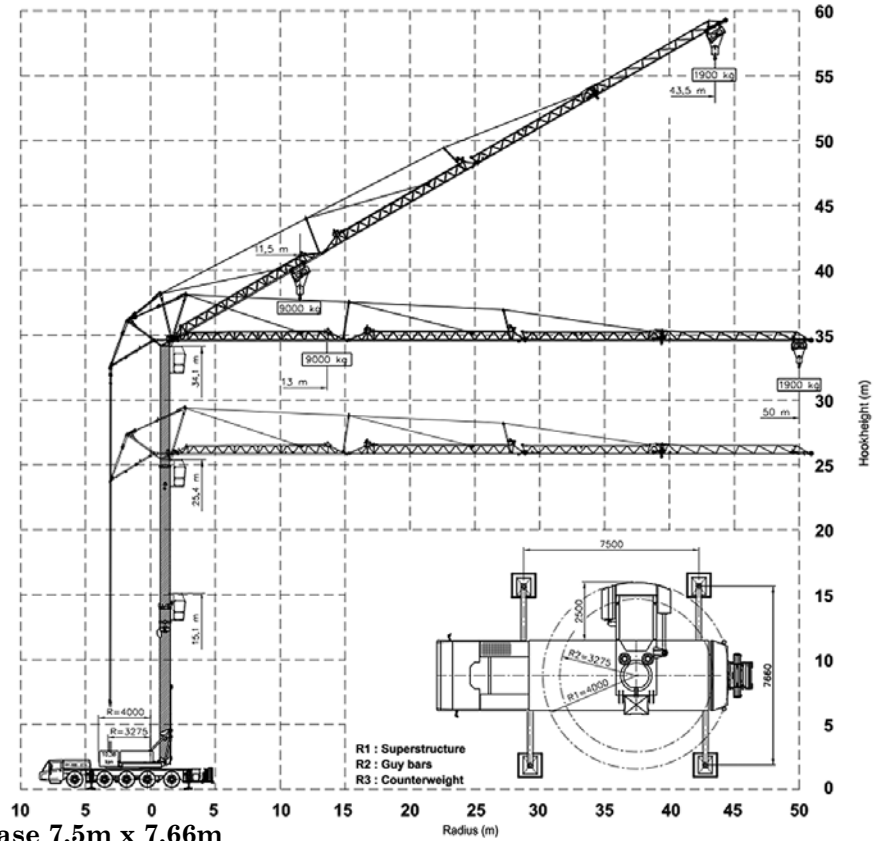
102-00599101

Contact Bernard Hunter Ltd for all your Crane Hire needs on 0131 663 4661 or email info@bernardhunter.com

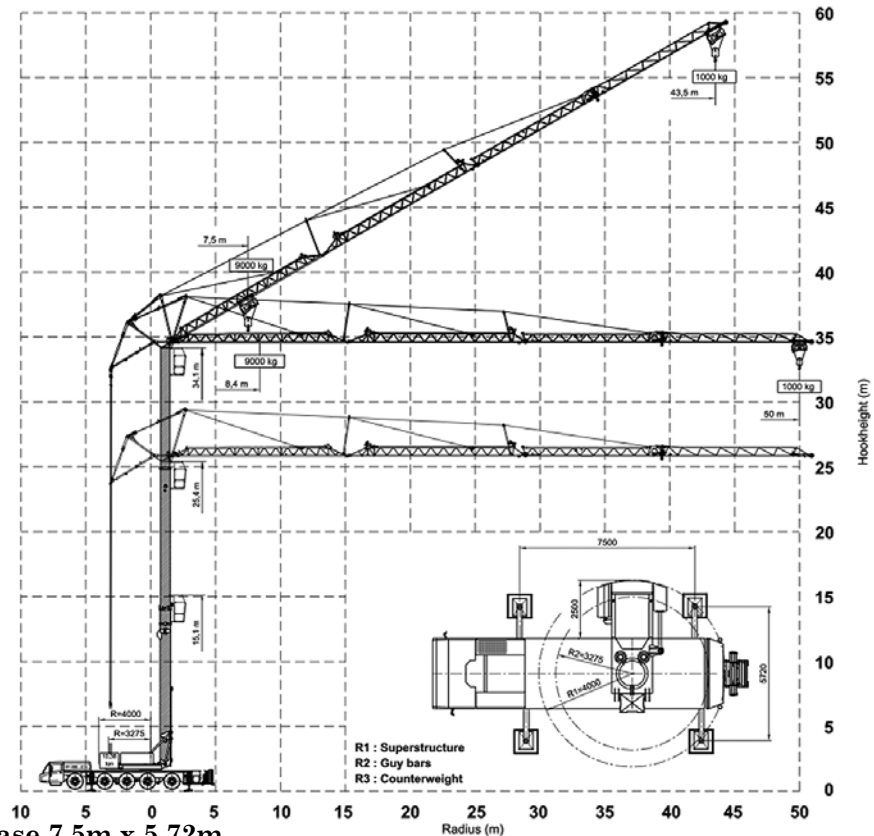


BERNARD HUNTER CRANE HIRE

SK599-AT5- HOISTING SPECIFICATIONS



Outrigger Support Base 7.5m x 7.66m



Outrigger Support Base 7.5m x 5.72m

Contact Bernard Hunter Ltd for all your Crane Hire needs on 0131 663 4661 or email info@bernardhunter.com